

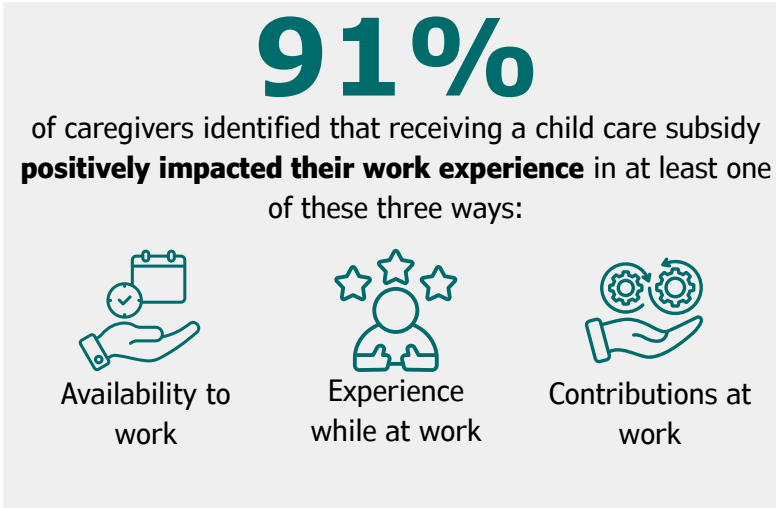
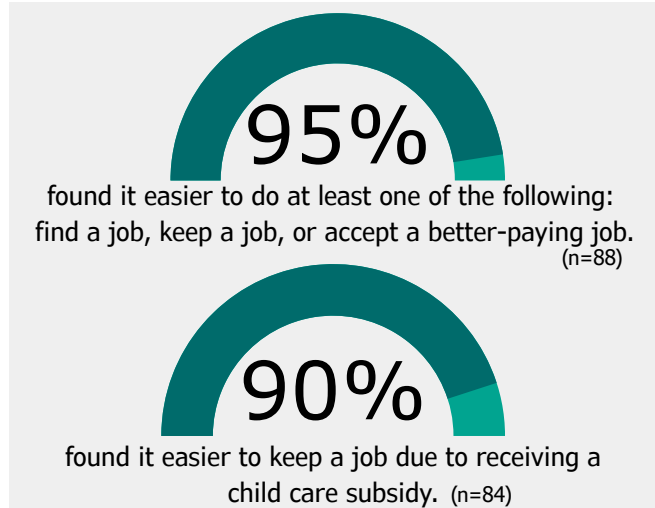
YMCA FSS Child Care Subsidy Experience

Since July 1, 2025, YMCA Childcare Resource Service has administered child care subsidies to over 7,000 families in San Diego County. As families enroll or recertify in services, they are asked to provide feedback on the impact of receiving these publicly funded financial assistance. Below are the results for September - December 2025.



CAREER DEVELOPMENT & CHILD CARE SUBSIDY IMPACT

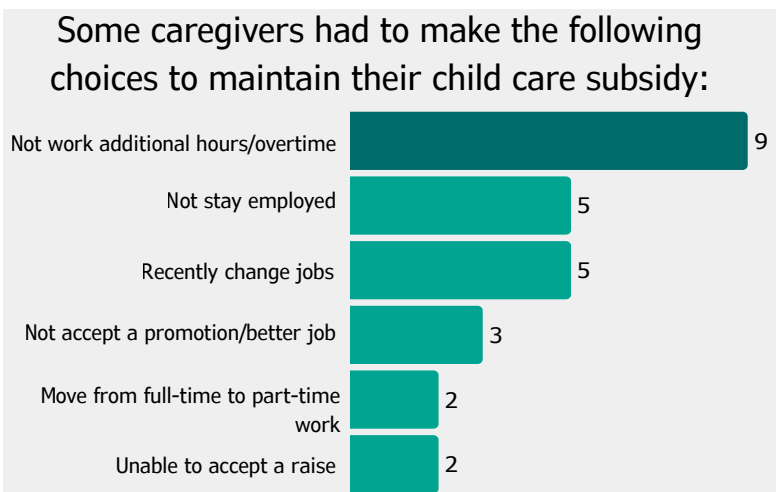
Child care subsidies allow caregivers to work, seek employment, or increase hours knowing their child is in a safe, supportive setting. This stability helps families increase earnings, reduce stress, and plan for the future. 93 respondents were working during this time.



“ If I wasn't receiving this subsidy I would not be able to pursue my career currently and would of stayed home due to childcare cost – Child Care Subsidy recipient”

MAINTAINING CHILD CARE SUBSIDIES

Income eligibility thresholds can create **difficult tradeoffs for families**. Even modest increases in earnings may **risk the loss of child care subsidy**, underscoring the need for systems that better support families as they work toward long-term stability.

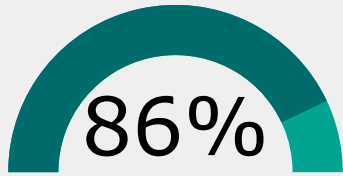


“ I recently bit the bullet and changed jobs. I am beginning to think that was a bad idea. [The promotion] is definitely going to go towards childcare so nothing has changed other than increased stress. – Child Care Subsidy recipient”

EDUCATIONAL DEVELOPMENT & CHILD CARE SUBSIDY IMPACT

Child care subsidies reduce barriers to school and training, helping caregivers pursue education and access better jobs and long-term economic mobility.

26 caregivers were going to school during this time.



86%

found it easier to do at least one of the following:
obtain a high school diploma or GED, attend an education/training program, or obtain a college degree.
(n=22)

86%

of caregivers identified that receiving a child care subsidy **positively impacted their school experience** in at least one of these three ways:



Availability to go to school



Experience while at school

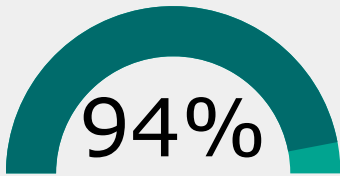


Contributions at school

“ Having child care allowed me to continue my education – Child Care Subsidy recipient ”

IMPACT OF CHILD CARE SUBSIDIES ON CHILDREN

Child care subsidies provide stability during key developmental years by giving children consistent, quality care that supports routines, learning, and strong relationships. While 135 caregivers responded to this survey, not all completed this section entirely.

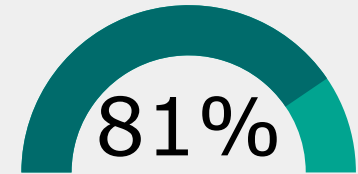


94%

were **very satisfied** with their child care subsidy experience. (n=118)

“[My child] is well rounded and happy to be at school. [They are] always looking forward to school days because [they are] surrounded by people who pour into [their] well being and education.”

– Child Care Subsidy recipient



81%

found it easier for their child to do at least one of the following:
receive care in a safe & healthy environment, engage in nurturing interactions, participate in developmentally appropriate activities, or feel happy in the program

OVERALL WELLBEING

Child care subsidies ease financial stress and support family well-being, giving families space to focus on health, connection, and growth. While 135 caregivers responded to this survey, not all completed this section entirely.

72%

found it easier to either **improve housing or feel peace of mind and less stress**

(n=97)

Receiving a child care subsidy positively impacted the following aspects of their life:

